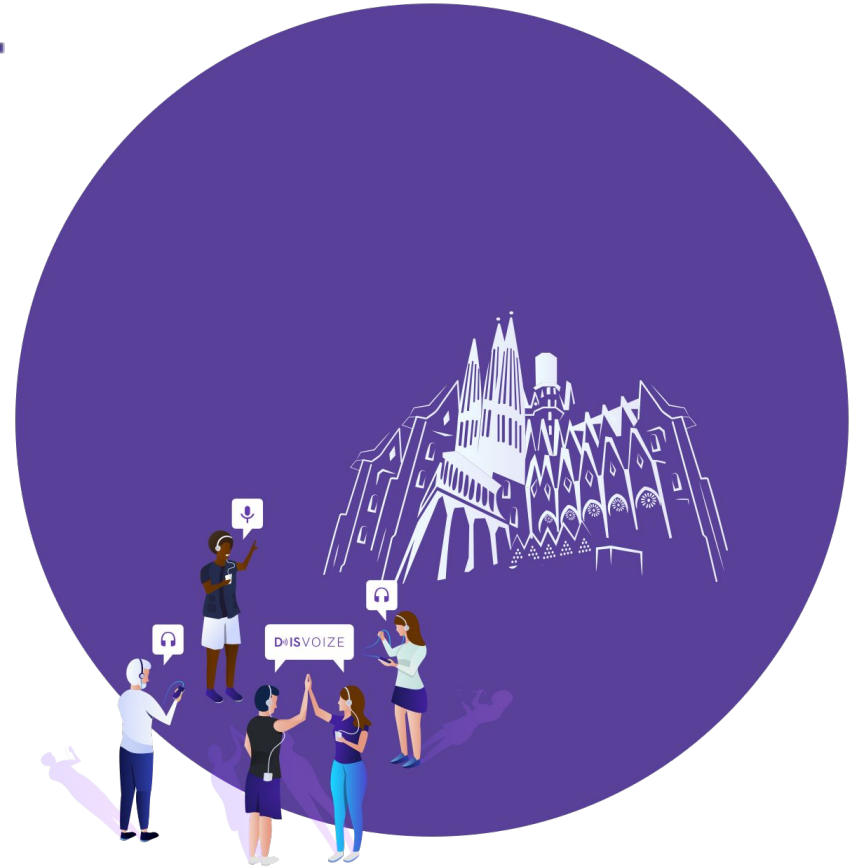




DISVOIZE

**The new generation group
tour guide system.**

**Improve your audience's audio
experience straight through your
smartphones.**



WHAT IS DISVOIZE APP?

DisVoize is the flexible and sustainable alternative solution to traditional Tour guide audio systems.

The app gives tour participants the flexibility to wander at will while they enjoy the live experience, using their own smartphones and headsets. The app works through mobile data or WiFi!

HIGH PERFORMANCE AND LOW CONSUMPTION

Spotify comparison for better understanding



Average Battery
consume 6% per hour
with the app working in
background.

Average Data consume
28 MB per hour.



Average Battery
consume 6% per hour
with the app working in
background.

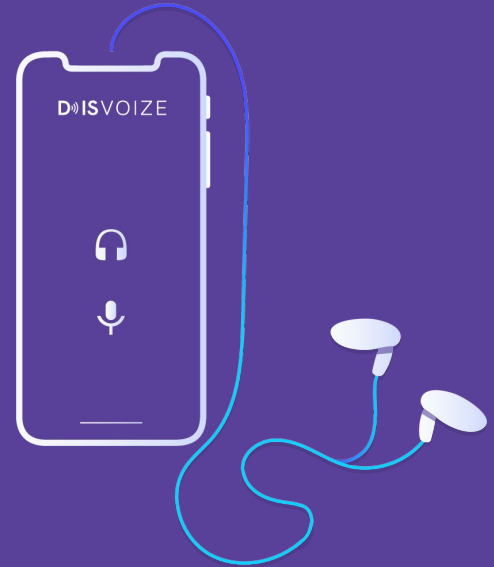
Average Data consume
33 MB per hour.

INSTALL AND CONNECT DISVOIZE APP



In order to deliver a better audio quality we invite guides to use a unidirectional microphone.

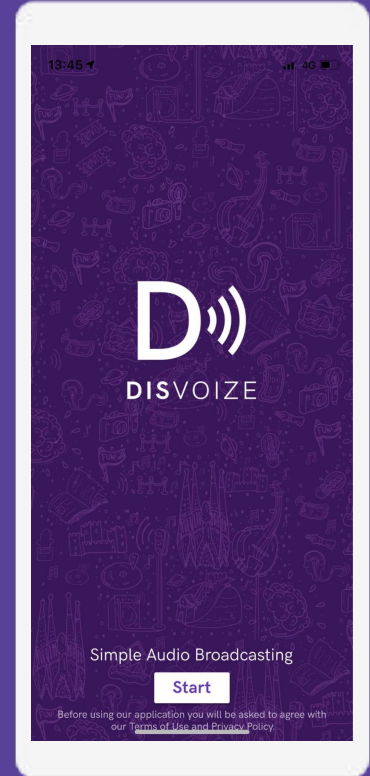
IMPORTANT: DON'T FORGET TO INFORM YOUR PUBLIC TO BRING THEIR OWN PHONES CHARGED AND THEIR PERSONAL HEADSETS FOR THE TOUR!



WELCOME!

When the user opens for the first time DisVoize app he/she has to:

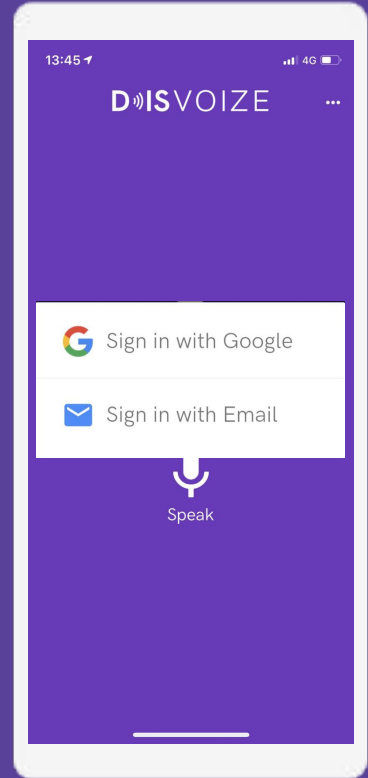
- Agree the Terms & Conditions
- Give to DisVoize the permission to use the microphone



SPEAKER ASSETS

Only the speaker has to login into the platform (this step is not necessary for the listeners).

After that DisVoize app generates a prefix speaker name (ex. Manuel) that allows to create a new personal channel name.



SPEAKER

The speaker creates a new channel name.

The channel name is formed by three elements:

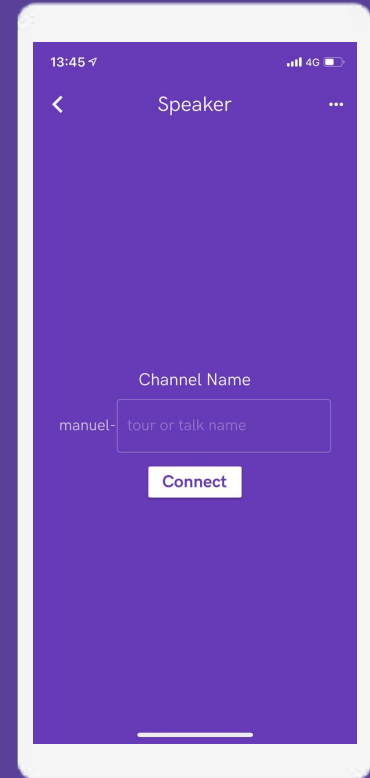
1. **Prefixed name** 2. Dash symbol (-) 3. **Customizable word**

ex. **manuel-hellogroup1**

Channel Name

manuel-

Connect

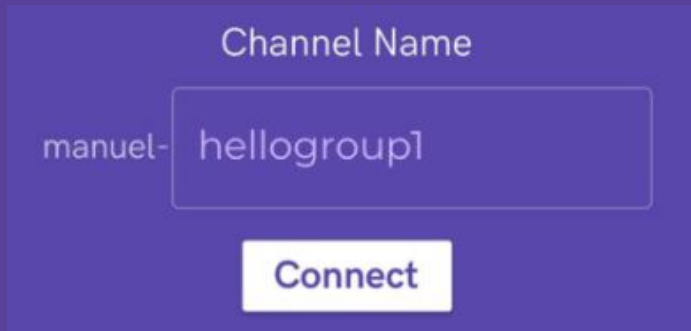


LISTENERS

In order to connect the listeners have to write into the text box the same channel name previously created by the speaker, respecting the three elements:

1. **Prefixed name** 2. Dash symbol (-) 3. **Customizable word**

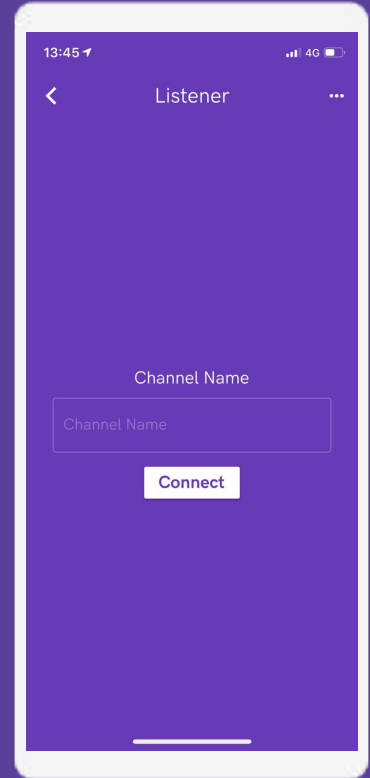
ex. **manuel-hellogroup1**



Channel Name

manuel-hellogroup1

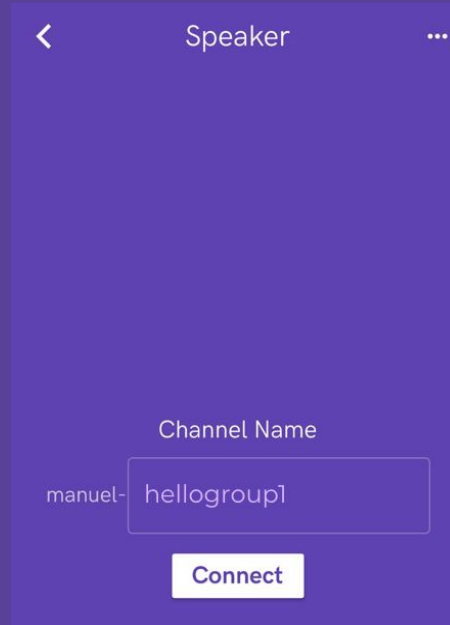
Connect



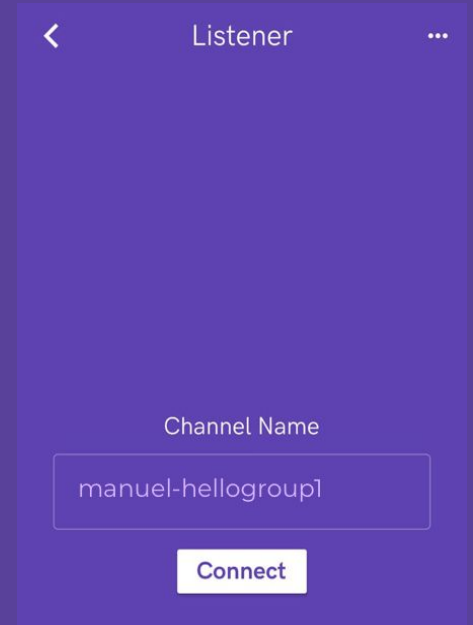
IMPORTANT

Make sure listeners write correctly the channel name previously created by the speaker, respecting:

- Spaces
- Don't forgetting the Dash symbol (-)



The screenshot shows the 'Speaker' interface. At the top, there is a back arrow, the title 'Speaker', and a three-dot menu icon. Below the title, there is a 'Channel Name' label. The input field contains the text 'manuel-hellogroup1'. At the bottom, there is a 'Connect' button.



The screenshot shows the 'Listener' interface. At the top, there is a back arrow, the title 'Listener', and a three-dot menu icon. Below the title, there is a 'Channel Name' label. The input field contains the text 'manuel-hellogroup1'. At the bottom, there is a 'Connect' button.

USERS CONNECTED

When listeners are connected to the same Speaker's channel, they can enjoy an amazing audio experience as long as they want!

